

# ZIRCONIUM CARBIDE POWDER

Stock No: NS6130-12-000939

ZrC



Follow us:



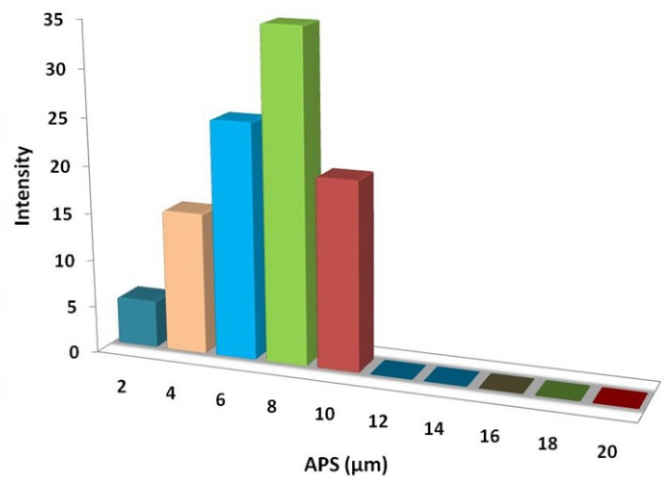
| [www.nanoshel.com](http://www.nanoshel.com) | [sales@nanoshel.com](mailto:sales@nanoshel.com)

## Zirconium Carbide Powder

One of the most important tasks of modern materials science is obtaining materials for usage in extreme conditions – at high temperatures and voltages, under the influence of aggressive media, etc. Zirconium carbide (ZrC) is an extremely hard refractory ceramic material, commercially used in tool bits for cutting tools. zirconium carbide (ZrC) powders providing high hardness, low coefficient of friction surface finish, high thermal shock resistance, high temperature stability, and high wear resistance. Zirconium carbide (ZrC) is one of the most attractive ultrahigh-temperature ceramics due to its excellent properties. Zirconium carbide can be used in new insulation thermostat textiles, nylon, fiber, hard alloy, nano-structured parts and devices: such as metallurgy, chemical industry, machinery, aviation, aerospace and energy industries using high temperature and corrosion resistant.

### Quick Facts

Product	: Zirconium Carbide Powder
Color	: Gray Powder
Stock No	: NS6130-12-000939
CAS	: 12070-14-3
Purity	: 99.9%
APS	: <10µm
Other Metal	: 850ppm



## Technical Specification

Molecular Formula	Molecular Weight	Density	Melting Point
ZrC	103.23 g/mol	6.73g/cm <sub>3</sub>	3540 °C

## Applications

- Wear Surface (Wear Resistant) Parts And Coatings. Parts And Coatings That Undergo Fretting, Abrasion, Cavitation, And Particle Erosion.
- High Emissivity And High Current Capacity At Elevated Temperatures,
- Making It A Promising Material For Use In Thermo-Photovoltaic Radiators
- Field Emitter Tips And Arrays.

ISO 9001:2015  
CERTIFIED COMPANY



**INTELLIGENT MATERIALS PVT LTD**  
Derabassi  
Punjab (140507)  
INDIA

+91 9779 550077, 9779238252

**NANOSHEL UK LIMITED**  
Chapel House,  
Chapel St Cheshire,  
CW12 4AB United Kingdom

+44 1782 454 144, +44 74 105 48802

**NANOSHEL LLC**  
3422 Old Capitol Suit  
1305 Wilmington DE - 19808  
United States

+1 646 470 4911

