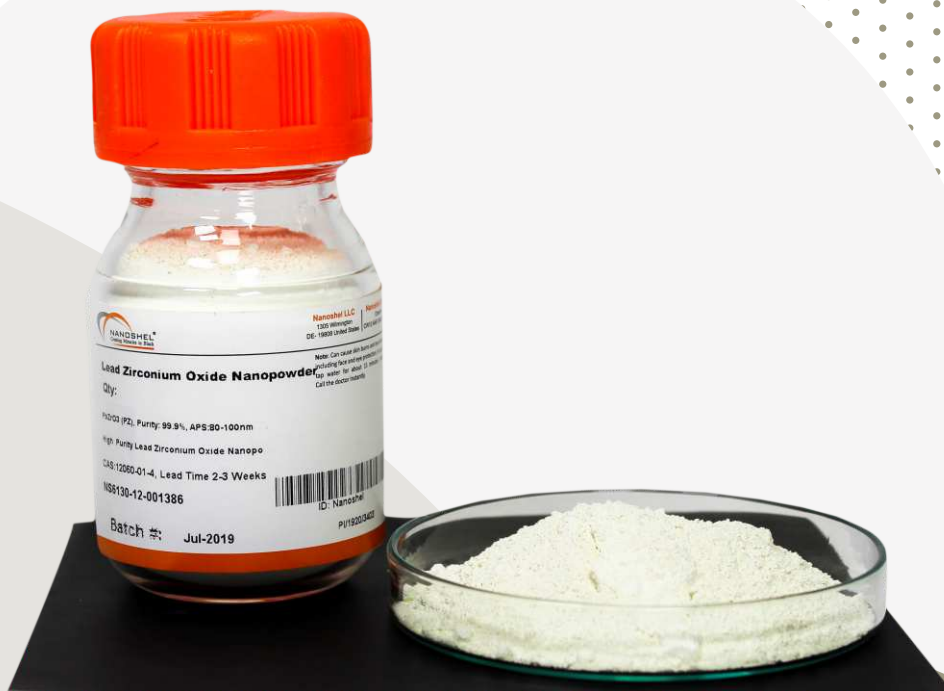


# STRONTIUM IRON OXIDE NANOPOWDER



Purity  
**99.5%**



NS6130-12-001328



Follow us:

f @ t in | [www.nanoshel.com](http://www.nanoshel.com) | [sales@nanoshel.com](mailto:sales@nanoshel.com)

## STRONTIUM IRON OXIDE NANOPOWDER

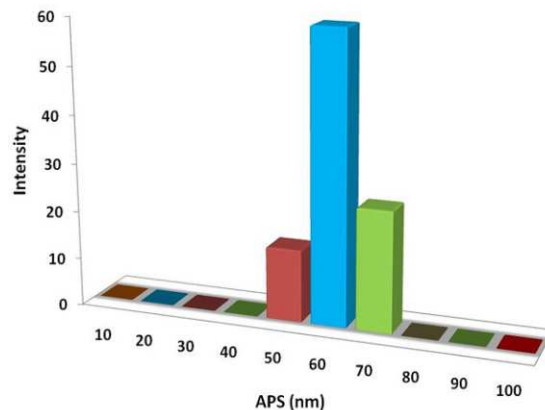
Strontium hexaferrite's chemical formula is  $\text{SrFe}_{12}\text{O}_{19}$  and it is well known for its high coercivity because of its magnetocrystalline anisotropy. It has been widely utilized in industrial applications as permanent magnets. Moreover, they can be powdered and formed easily; they are discovering the applications into micro and nano-types systems for instance biomarkers, bio diagnostics and biosensors. It is prepared by chemical method and found that it has an isomorphous structure.

## QuickFACTS

Product	:	Strontium Iron Oxide Nanopowder
Stock No	:	NS6130-12-001328
CAS	:	12023-91-5
Form	:	Powder
Symbol	:	$\text{SrFe}_{12}\text{O}_{19}$
Group	:	Strontium2, Iron 8/Oxygen 16

### Electronic Configuration:

Strontium [Kr] 5s<sup>2</sup>/Iron [Ar] 3d<sup>6</sup> 4s<sup>2</sup>/Oxygen [He] 2s<sup>2</sup> 2p<sup>4</sup>



### ADDITIONAL POWDER CHARACTERISTICS

Stock No.	Purity	APS
NS6130-12-001328	99.5%	60nm

### TECHNICAL SPECIFICATION

Molecular Formula	Molecular Weight	Density	Melting Point
$\text{SrFe}_{12}\text{O}_{19}$	1061.75 g/mol	5.18 g/cm <sup>3</sup>	>450 °C

### CHEMICAL COMPOSITION

Product	Weight Percent (nominal)	
	$\text{SrFe}_{12}\text{O}_{19}$	Other Metal
Strontium Iron Oxide Nanopowder	99.5%	1000ppm

### APPLICATIONS

- > Strontium is used as an additive to flares, pyrotechnics
- > Provides high refractive index to glass
- > Biosensors
- > Used in biomarkers



20ZICE4589C



19ZAZGO1274G



20ZICE4588M

ISO 9001:2015  
CERTIFIED COMPANY

**INTELLIGENT MATERIALS PVT LTD**  
Derabassi  
Punjab (140507)  
INDIA

+91 9779 550077, 9779238252

**NANOSHEL UK LIMITED**  
Chapel House,  
Chapel St Cheshire,  
CW12 4AB United Kingdom

+44 1782 454 144, +44 74 105 48802

**NANOSHEL LLC**  
3422 Old Capitol Suit  
1305 Wilmington DE - 19808  
United States

+1 646 470 4911