

# SILVER Coated Silicon Wafer

## Product Description

Silicon wafer-Silicon substrate is a thin slice of semiconductor material. It is used in electronics for the fabrication of integrated circuits. and in photovoltaics for conventional, wafer-based solar cells. There are two types of varieties available in silicon wafer such as doped and un-doped. A un-doped type is a pure form of silicon, whereas the doped is non-pure form in which a few elements have added in the form of impurities or dopant. The un-doped is known as intrinsic silicon wafer while the doped termed as extrinsic or degenerate wafer depends on the amount of doping.

- Totally customized
- Low and medium volumes
- Any diameter
- Any orientations
- Any thickness

## Key Features

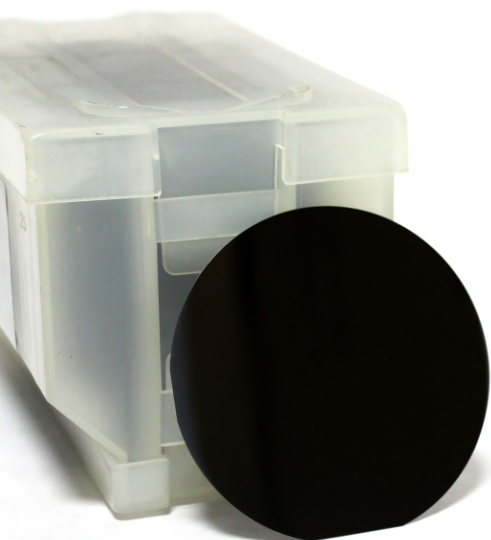
Product	:	Silver Coated Silicon Wafer
Stock No	:	NS6130-10-1178
CAS	:	7440-21-3
Diameter	:	4"
Thickness	:	275µm

## Typical Properties

Dopant	:	Silver
Crystal Orientation	:	< 100>
Resistivity	:	1-50 Ohm/cm
Vapor Pressure	:	10-6 Torr

## Applications





- ✓ Optics
- ✓ Nanotechnology
- ✓ Biotechnology
- ✓ AFM applications



**4"**  
**Inch**

**NS6130-10-1178**

Follow us:

    | [www.nanoshel.com](http://www.nanoshel.com) | [sales@nanoshel.com](mailto:sales@nanoshel.com)

