

MOLYBDENUM DISULFIDE POWDER

Stock No: NS6130-05-581

MoS_2



Follow us:



| www.nanoshel.com | sales@nanoshel.com

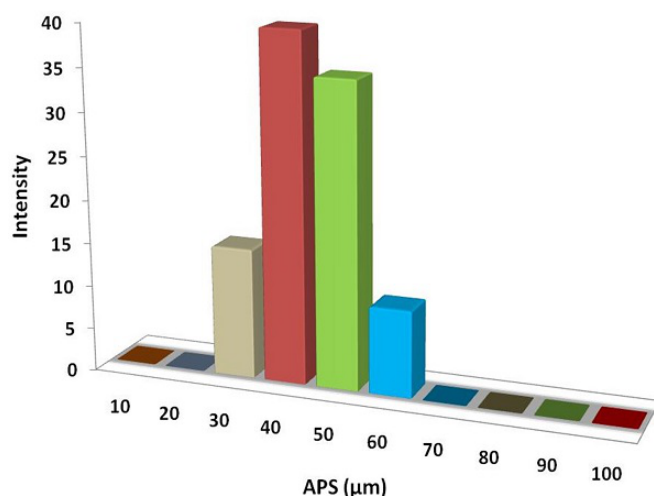
Molybdenum Disulfide Powder

The properties of MoS₂ including physical and chemical properties, electrical properties, effects of temperature and oxidation as well as application areas such as greases, fluid lubricants, and solid film (dry) lubricants where molybdenum disulfide is widely implemented.

Molybdenum disulfide is one of the best known solid lubricants, and although it originally gained popularity in aerospace and military applications, it is now commonly found in a variety of lubrication applications. It is widely used in greases and specialized grease-like products known as pastes, in fluid lubricants such as automotive and industrial gear oils, in solid film lubricants including but not limited to burnished (rubbed-on) films, sputtered coatings, resin bonded and impingement coatings.

Quick Facts

Product	:	Molybdenum Disulfide Powder
Color	:	Black Powder
Stock No	:	NS6130-05-581
CAS	:	1317-33-5
Purity	:	99%
APS	:	40-50µm



Technical Specification

Molecular Formula	Molecular Weight	Density	Melting Point
MoS ₂	160.07 g/mol	4.8 g/cm ₃	1185 °C

Applications

- Vacuum applications
- Automotive applications
- Military applications
- Fuel cell applications
- Circuitry and microelectronics
- Photonics and photovoltaics
- Lubricant

ISO 9001:2015
CERTIFIED COMPANY



2021CE4589C



192AZ001274G



2021CE4588M

INTELLIGENT MATERIALS PVT LTD
Derabassi
Punjab (140507)
INDIA

+91 9779 550077, 9779238252

NANOSHEL UK LIMITED
Chapel House,
Chapel St Cheshire,
CW12 4AB United Kingdom

+44 1782 454 144, +44 74 105 48802

NANOSHEL LLC
3422 Old Capitol Suit
1305 Wilmington DE - 19808
United States

+1 646 470 4911

