

# MOLYBDENUM DISILICIDE POWDER

Stock No: NS6130-12-000781



Follow us:



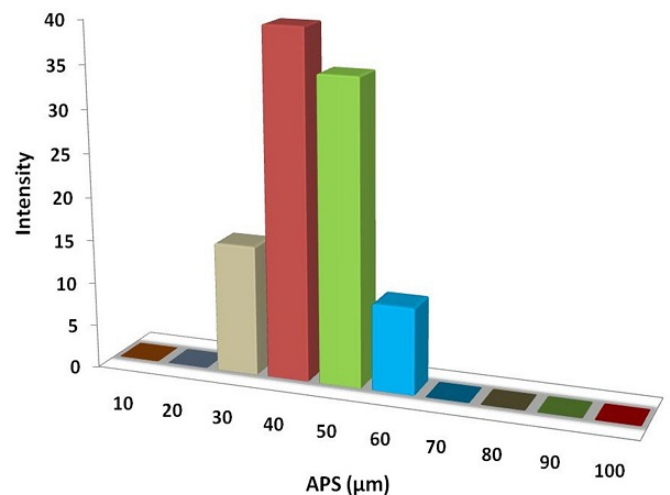
| [www.nanoshel.com](http://www.nanoshel.com) | [sales@nanoshel.com](mailto:sales@nanoshel.com)

## Molybdenum Disilicide Powder

Molybdenum disilicide ( $\text{MoSi}_2$  or molybdenum silicide), an intermetallic compound a molybdenum silicide, and A refractory primary use in ceramic ad heating elements. Molybdenum disilicide ( $\text{MoSi}_2$ ) has both ceramic refractory and anti-oxidation properties, but also the electrical conductivity and high temperature plasticity of the metal, as well as lower specific gravity. Molybdenum disilicide ceramic powder has high purity, narrow particle size distribution, with good high temperature oxidation resistance, high temperature plasticity, thermal conductivity and fluidity, has a wide range of applications in the field of high temperature structural ceramics.

### Quick Facts

Product	: Molybdenum Disilicide Powder
Color	: Gray Powder
Stock No	: NS6130-12-000781
CAS	: 235-231-8
Purity	: 99.9%
APS	: 40-50 $\mu\text{m}$
Other Metal	: 900ppm



## Technical Specification

Molecular Formula	Molecular Weight	Density	Melting Point
$\text{MoSi}_2$	152.11 g/mol	6.31 g/cm $_3$	1870-2030 $^{\circ}\text{C}$

## Applications

- Composite ceramics
- Heating elements
- Constituent of glow plugs for engines
- $\text{MoSi}_2$  is widely used in electric heating elements.

ISO 9001:2015  
CERTIFIED COMPANY



**INTELLIGENT MATERIALS PVT LTD**  
Derabassi  
Punjab (140507)  
INDIA

+91 9779 550077, 9779238252

**NANOSHEL UK LIMITED**  
Chapel House,  
Chapel St Cheshire,  
CW12 4AB United Kingdom

+44 1782 454 144, +44 74 105 48802

**NANOSHEL LLC**  
3422 Old Capitol Suit  
1305 Wilmington DE - 19808  
United States

+1 646 470 4911

