

# Magnesium Calcium

## Alloys Powder

An alloy is a mixture of chemical elements of which at least one is a metal. Unlike chemical compounds with metallic bases, an alloy will retain all the properties of a metal in the resulting material, such as electrical conductivity, ductility, opacity, and luster, but may have properties that differ from those of the pure metals, such as increased strength or hardness.

Molybdenum Calcium Alloy Powder is alloys of Molybdenum with Calcium. magnesium calcium alloy is primarily used in the removal of bismuth from lead for refinement purposes. Used in debismuthizing process which based on the traditional Kroll-Betterton technique. Magnesium-Calcium alloy can be used for biodegradable implant material in orthopedic fixation applications.

Formula

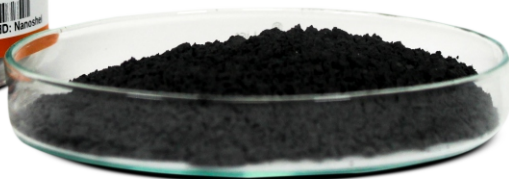
**MgCa**

Stock No:

**NS6130-07-737**



Purity  
**99.9%**



CAS : 7439-95-4 / 7440-70-2

Form : powder

APS:  
**50µm**



Follow us:



| [www.nanoshel.com](http://www.nanoshel.com) | [sales@nanoshel.com](mailto:sales@nanoshel.com)