

COBALT BLUE POWDER

Stock No: NS6130-12-000472

Co



Follow us:



| www.nanoshel.com | sales@nanoshel.com

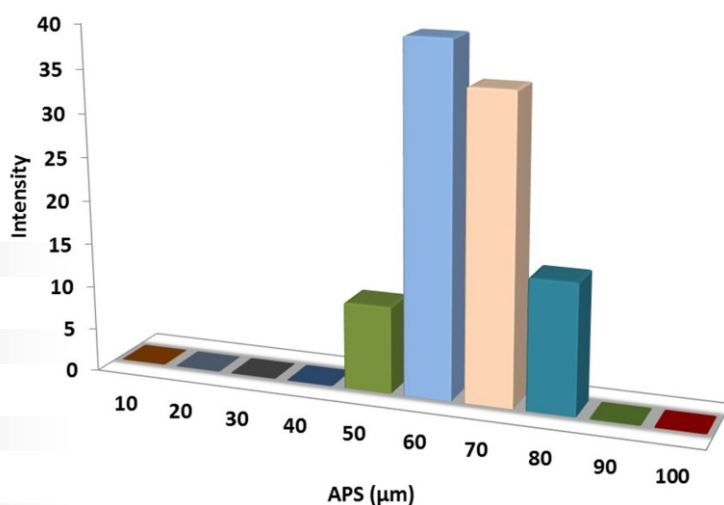
Cobalt Blue Powder

Cobalt blue is a blue pigment made by sintering cobalt(II) oxide with alumina at 1200 °C. Chemically, cobalt blue pigment is cobalt(II) oxide-aluminium oxide, or cobalt(II) aluminate, CoAl_2O_4 . Inorganic pigment is heat resistant, strong coloring power, colorful and stable quality, mainly applied in enamel, glass, ceramics, plastics, painting, high grade ink, high-end art pigment, permanently color patch, far-infrared materials, powder coating areas, etc.

Exterior coating, fluorocarbon coating, industrial coating, aerospace and marine coatings, automotive coating, decorative coating, camouflage coatings, coil coating, road marking paint, rock frescos coating, powder coating, oily paint, water-based paint, light-resistance paint, weather-resistance paint, UV coating, high temperature paint etc.

Quick Facts

Product	: Cobalt Blue Powder
Color	: Blue Powder
Stock No	: NS6130-12-000472
CAS	: 12672-27-4
Purity	: >99%
APS	: 60-70 μm
Other Metal	: 8500ppm



Technical Specification

Molecular Formula	Molecular Weight	Density	Melting Point
Co	181.881 g/mol	4.1g/cm ₃	>1000°C

Applications

- Paints, coatings
- Glass: Technology glass, colored glass, glass lamps etc.
- Inks: Colored inks, watermark inks, concave-convex inks etc.
- Building material: Colored sand, concrete etc.

ISO 9001:2015
CERTIFIED COMPANY



INTELLIGENT MATERIALS PVT LTD
Derabassi
Punjab (140507)
INDIA

+91 9779 550077, 9779238252

NANOSHEL UK LIMITED
Chapel House,
Chapel St Cheshire,
CW12 4AB United Kingdom

+44 1782 454 144, +44 74 105 48802

NANOSHEL LLC
3422 Old Capitol Suit
1305 Wilmington DE - 19808
United States

+1 646 470 4911

