

# CHROMIUM CARBIDE POWDER

Stock No: NS6130-05-578



Follow us:



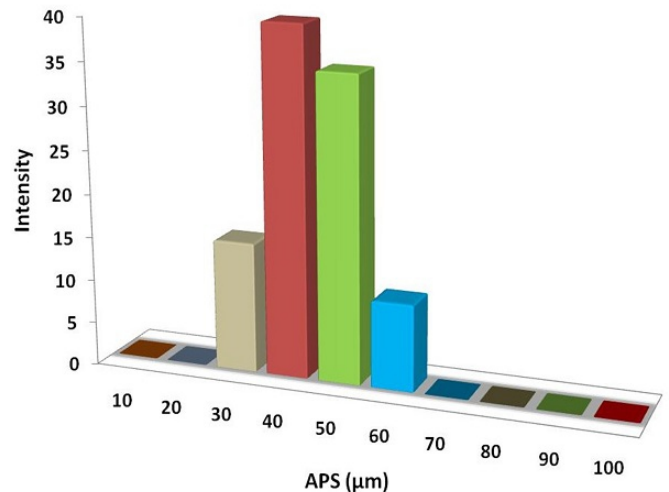
| [www.nanoshel.com](http://www.nanoshel.com) | [sales@nanoshel.com](mailto:sales@nanoshel.com)

## Chromium Carbide Powder

Chromium carbide is a chemical element with symbol and atomic number 24. Chromium metal is of high value for its high corrosion resistance and hardness. Chromium carbide is excellent refractory ceramic known for its hardness. Chromium carbide is a ceramic compound that exists as a gray solid at standard conditions. It is a very hard refractory ceramic material with an orthorhombic crystal structure, usually processed by sintering. Chromium carbide coating technology is of great interest because of its high hardness, thermal stability, wear and oxidation resistance.

### Quick Facts

Product	: Chromium Carbide Powder
Color	: Gray Powder
Stock No	: NS6130-05-578
CAS	: 12012-35-0
Purity	: 99%
APS	: 40-50µm
Other Metal	: 8500ppm



### Technical Specification

Molecular Formula	Molecular Weight	Density	Melting Point
$\text{Cr}_3\text{C}_2$	180.01 g/mol	6.68 g/cm <sub>3</sub>	1895 °C

### Applications

- Corrosion resistance parts
- Hot working tools, brake pad production
- Grain growth inhibitors in carbide manufacturing
- Electroplating, and biotechnology

ISO 9001:2015  
CERTIFIED COMPANY



**INTELLIGENT MATERIALS PVT LTD**  
Derabassi  
Punjab (140507)  
INDIA

+91 9779 550077, 9779238252

**NANOSHEL UK LIMITED**  
Chapel House,  
Chapel St Cheshire,  
CW12 4AB United Kingdom

+44 1782 454 144, +44 74 105 48802

**NANOSHEL LLC**  
3422 Old Capitol Suit  
1305 Wilmington DE - 19808  
United States

+1 646 470 4911

